

EXCESSIVE FORCE MAY LEAD TO CRIMINAL PROSECUTION

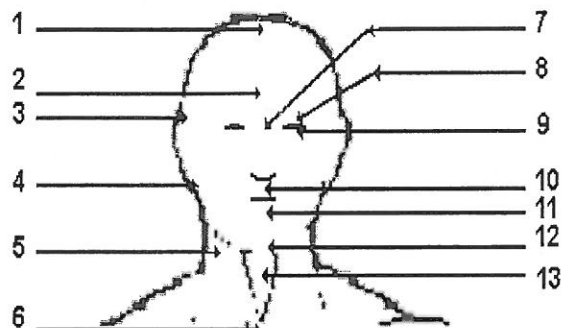
VITAL PARTS OF THE BODY

The impact on vital points is indicated by numbers as followed:

1. Moderate pain
2. Sharp pain
3. Severe pain
4. Unconsciousness or temporary paralysis
5. Fatal

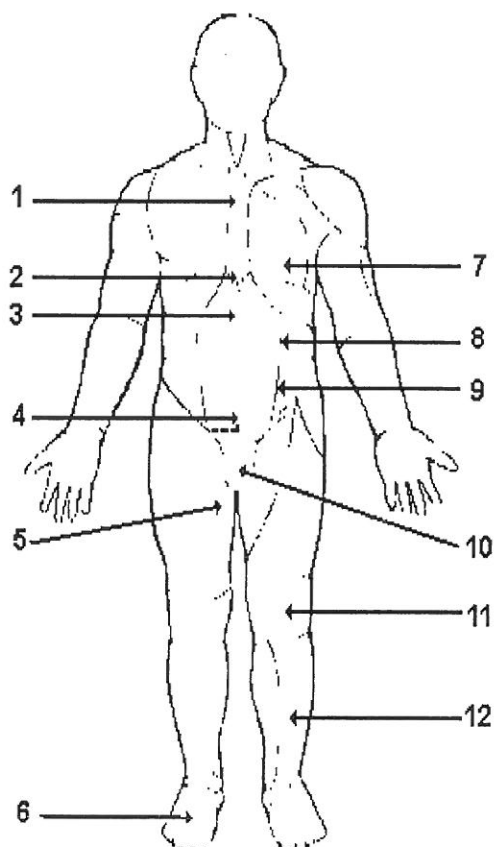
The body has about 280 vital points so this list is far from complete.

The front of the head



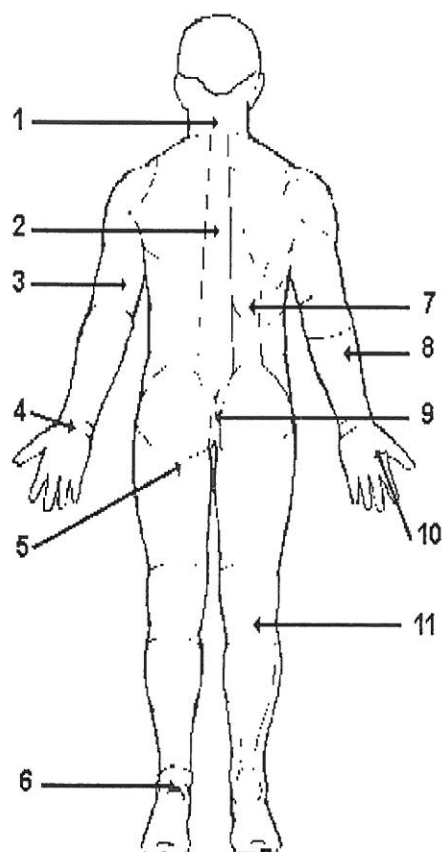
Number	Description	Result of light impact	Result of full-power attack
1	Top of head	2	4
2	Forehead	2	4
3	Temple	3	5
4	Cheekbone	2	4
5	Neck artery	3	5
6	Cervical trachea	3	5
7	Glabella	2	4
8	Intraocular pressure	2	4
9	Eyeball	2/3	4/5
10	Philtrum	1/2	3/4
11	Jaw	2	4
12	Chin	2	4
13	Adam's apple	3	5

The front of the body



Number	Description	Result of light impact	Result of full-power attack
1	Center of the torax	2	4
2	Lower end of sternum	3	5
3	Solar plexus	3	5
4	Center of abdomen	2	4
5	Inner thigh	2	4
6	Center of instep	2	4
7	Brest	1	3
8	Thorax flank	2	4
9	Flank pit of waist	2	4
10	Groin	3	5
11	Upper knee-edge	2	4
12	Shin	1	3

The back of the body



Number	Description	Result of light impact	Result of full-power attack
1	Back of the neck	3	5
2	(several parts of) backbone	3	5
3	Outside of upper arm	1	4
4	Outerwrist	1	3
5	Hipnerve	2	4
6	Achilles heel	2	4
7	Kidneys	2	4
8	Elbow (just below)	1	3
9	Coccyx	2	4/5
10	Pit of thumb and first-finger	2	4
11	Kneepit	1	3